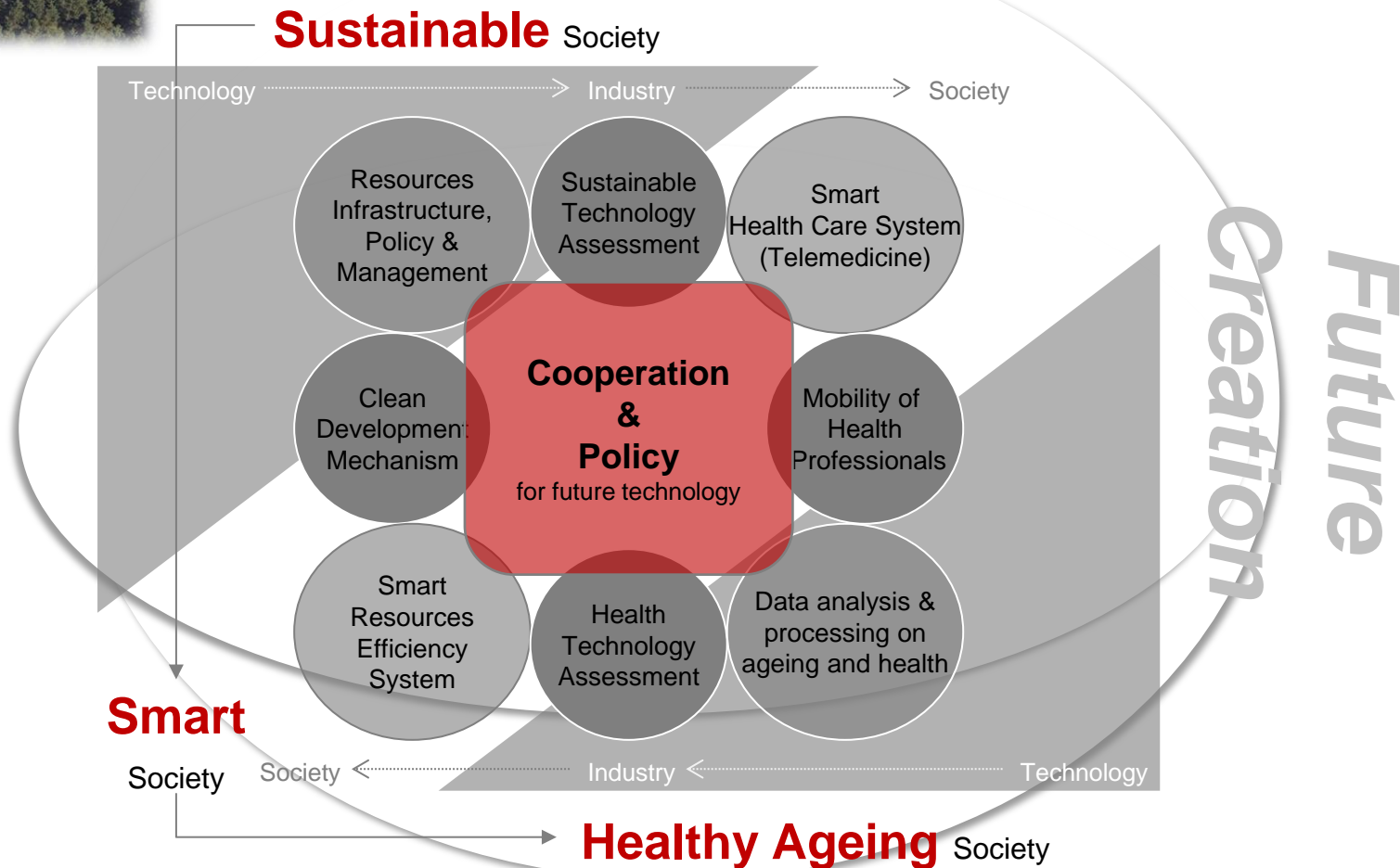


Korea Institute of Science and Technology (KIST) Europe



Established as the first Korean government-funded research institute abroad at the Uni des Saarlandes, Saarbrücken Germany





To develop a green business model & supporting industrial policies for the waste ink management

by employing the new recycling technology and systematic implementation strategy resulting from the integrated life-cycle assessment

Partner	Organisation	Country
Project Coordinator	KIST Europe 	Germany
Participant	University of Alicante 	Spain
Participant	EPFL 	Switzerland

